

2021 Bond Update



Presented By:
ESC Region 13 and Sledge Engineering

Board Meeting
May 15, 2024

Overall Bond Project Status– Current as of 05/06/24

Project	Design	Bid	Construct	Open
Athletics Turf Baseball/Softball				Jan-22
Safety/Security–Cameras HS&MS				Jan-22
Safety/Security–Cameras JES&IES				Feb-23
HS Parking Lot & Transportation				Dec-22
HS Athletics Improvements				Apr-23
HS Stormwater				Dec-22
Double Creek Elem School			* Punch List *	Aug-23
Middle School Expansion			* Punch List *	Aug-23
1916 Building Renovations			95%	Jun-24
High School Expansion			80%	Aug-24
Transportation Expansion				Dec-23
Technology Infrastructure				Dec-23

11/23/23

06/08/24

Summary Status of Construction Projects:

1. DCES & JMS

- a) Addressing punch list items (*items delayed for summer work starts after last day of school*)
- b) Finalizing closeout documentation
- c) DCES Retainage = **\$1.7 million** (*partial release pending by S&P for JISD consideration*)
- d) JMS Retainage = **\$905k**



2. 1916

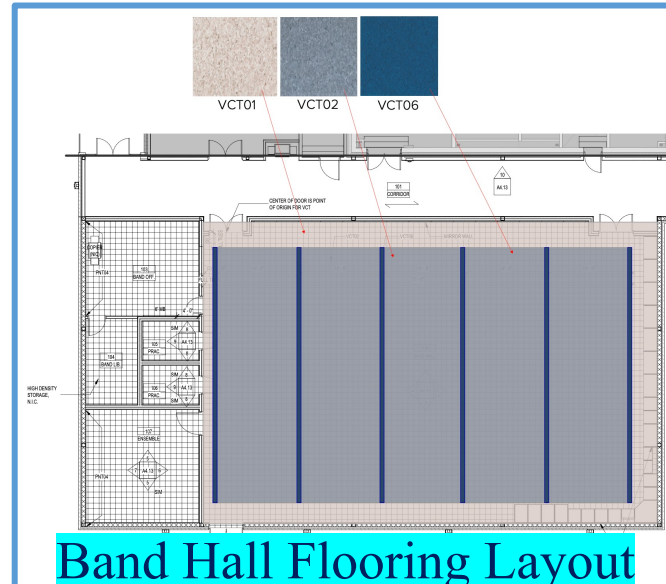
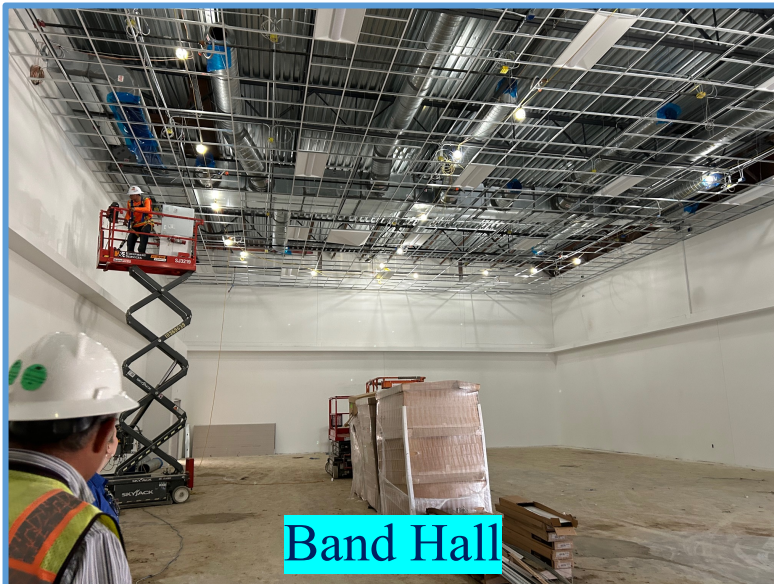
1. Addressing punch list items (*S&P list from 05/02/24 and Huckabee list from 05/7/24*)
2. Technology install continues (*testing and troubleshoot after main internet established*)
3. Furniture install (*started 05/06/24*)
4. Billed to Date = **95%**
5. Balance to Pay = **\$593,000**



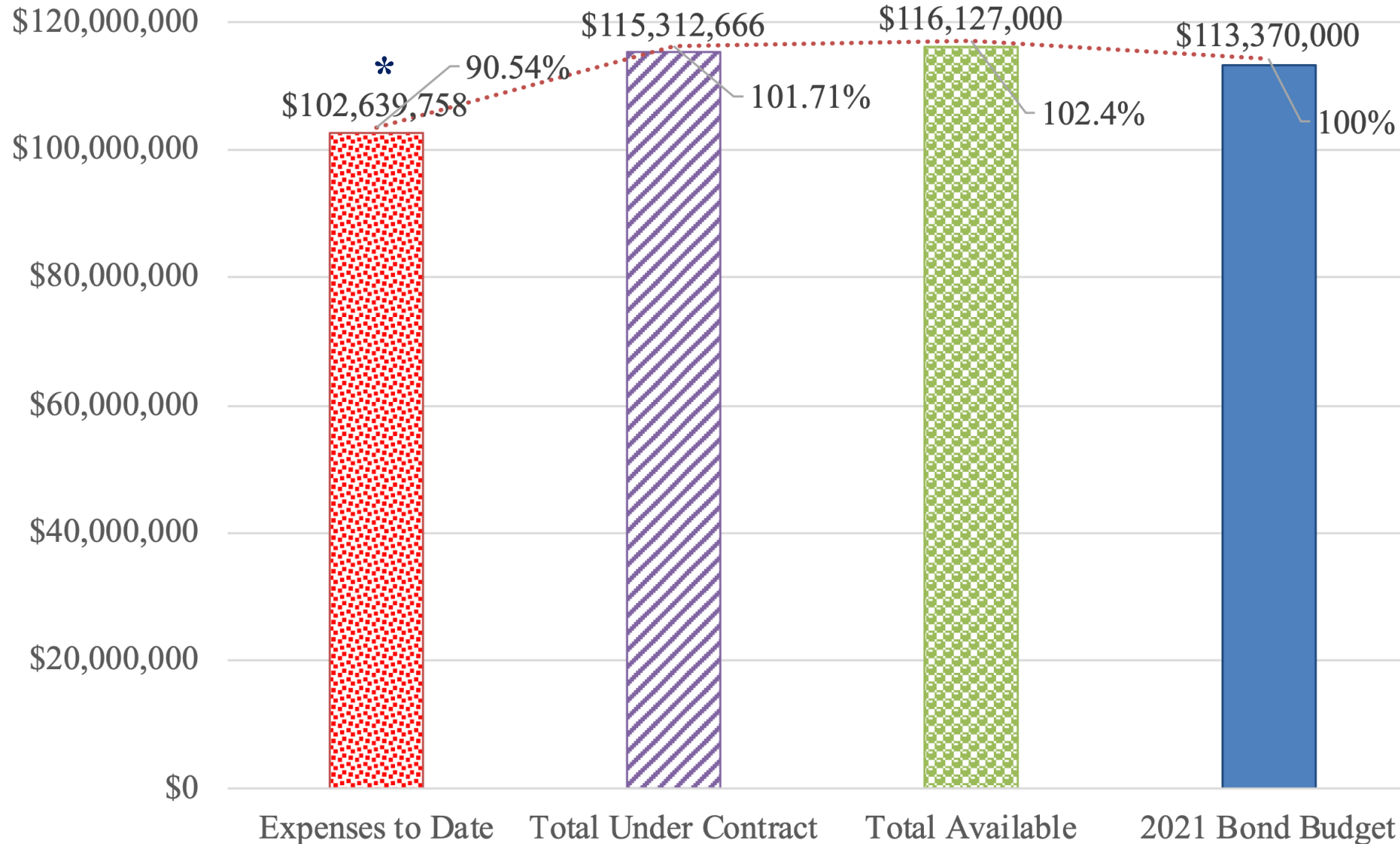
Summary Status of Construction Projects (*continued*):

3. JHS Additions and Renovations

- a) Kitchen – Equipment install continues
- b) Classroom & Band Hall – Finishes continue
- c) Completion Date = **07/16/24** (Original date 06/08/24)
- d) Percent “Complete” = **80%** as of 04/30/24
- e) Balance to Pay = **\$6.5 million**



Project Accounting – Summary (05/06/24)



* Previous Report = \$102.1 million

■ Amount Percent

*Any
Questions?*



**Jarrell
Independent School District**



REGION 13
EDUCATION SERVICE CENTER

